



Invest. Empower. Transform

Timothy E. Lampkin

Community Development Officer

[timothy.lampkin@southernpartners.org](mailto:timothy.lampkin@southernpartners.org)

# Community Engagement

600+ residents create a detailed community strategic plan



# Civil War Helena

An ambitious 29-site Civil War Helena plan is released at a July event attracting more than 300 people. The initiative is expected to draw more than 90,000 visitors annually at full scale.



2009

# Court Square Park

Abandoned lot transformed into expanded park with Farmers Market pavilion.



# Downtown Loan Fund

A \$3 million low-interest downtown loan fund is created to spur investments in historic homes and downtown businesses



2009

# Blues Festival

Festival celebrates 25-year anniversary and has the strongest line-up in festival history



2010

# Delta Bridge Project Expands into Coahoma County, Mississippi



2010

# Helena River Park

A partnership with the Audubon Society produces 15 wildlife and nature panels in the River Park area

**What is a bottomland hardwood forest?**  
Found in the floodplains of rivers and streams, these wetland communities depend on water. Unlike a swamp (where water is always present), bottomland hardwood forests experience seasonal flooding.

**Who lives in these forests?**  
Rich forest soils are prime real estate for more than 70 species of trees. A diverse population of birds, fish and animals live in these areas, as well. Many cannot survive anywhere else. A third of the nation's threatened and endangered plants and animals rely on wetland habitats.

**◀ Red-bellied Woodpecker**  
Constructs nests in large, dead trees in open and swampy woodlands.

**▶ Indigo Bunting**  
Often migrates during the night, using the stars to direct itself.

**White Ibis**

2011



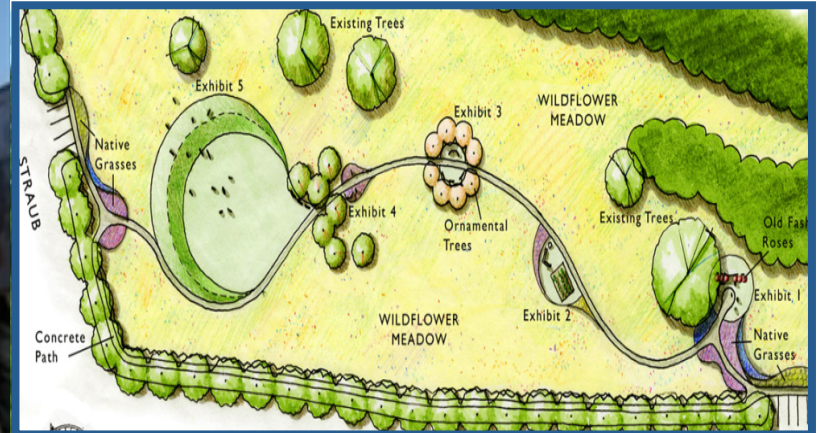
# Sunflower River Weir



2011

# Freedom Park

First "Network to Freedom" Underground Railroad Site in Arkansas



2012

# *KaBOOM!* Playground

Over 200 diverse local residents came together for Build Day



2012

# New Stage for Area Festivals



2013

# New Stage for Area Festivals



2014

# Downtown Facade Grants



**Before**

**2014**

# Downtown Facade Grants



2014



Invest. Empower. Transform

Timothy E. Lampkin

Community Development Officer

[timothy.lampkin@southernpartners.org](mailto:timothy.lampkin@southernpartners.org)